



The Attachment Network

OF NORTH CAROLINA

01/20/2023

AGENDA 09/16/2022

Welcome, Karen Burns	5 mins
Grounding Activity, Karen Burns	5 mins
Data blitz - Amanda Sanders	10 mins
Guest Speakers Morgan Forrester Ray, MSW presents <i>The EarlyWell Initiative</i>	60 min
Announcements	10 min

GROUNDING ACTIVITY

Go inside a stone
That would be my way.
Let somebody else become a dove
Or gnash with a tiger's tooth.
I am happy to be a stone.

From the outside the stone is a
riddle:
No one knows how to answer it.
Yet within, it must be cool and quiet
Even though a cow steps on it full
weight,
Even though a child throws it in a
river,
The stone sinks, slow, unperturbed
To the river bottom
Where the fishes come to knock on it
And listen.

I have seen sparks fly out
When two stones are rubbed.
So perhaps it is not dark inside after
all;
Perhaps there is a moon shining
From somewhere, as though behind
a hill—
Just enough light to make out
The strange writings, the star charts
On the inner walls.

[Charles Simic](#)

DATA BLITZ



PRENATAL ATTACHMENT AND PARENT TO INFANT ATTACHMENT: A SYSTEMATIC REVIEW

Frontiers in Psychology

Tommaso Trombetta, Maura Giordano, Fabrizio Santoniccolo, Laura Vismara, Anna Maria Della Vedova, Luca Rolle

March 2021

INTRODUCTION:

- Parental side of attachment is fundamental for child's development and it is supposed to start in the mother and fathers mind during pregnancy
- Parental affective investment toward the fetus as a precursor of the post-natal relationship?
- Focused more on predictors of prenatal attachment rather than consequences
- Differences in assessing prenatal attachment: self-report, observed, or projective measures

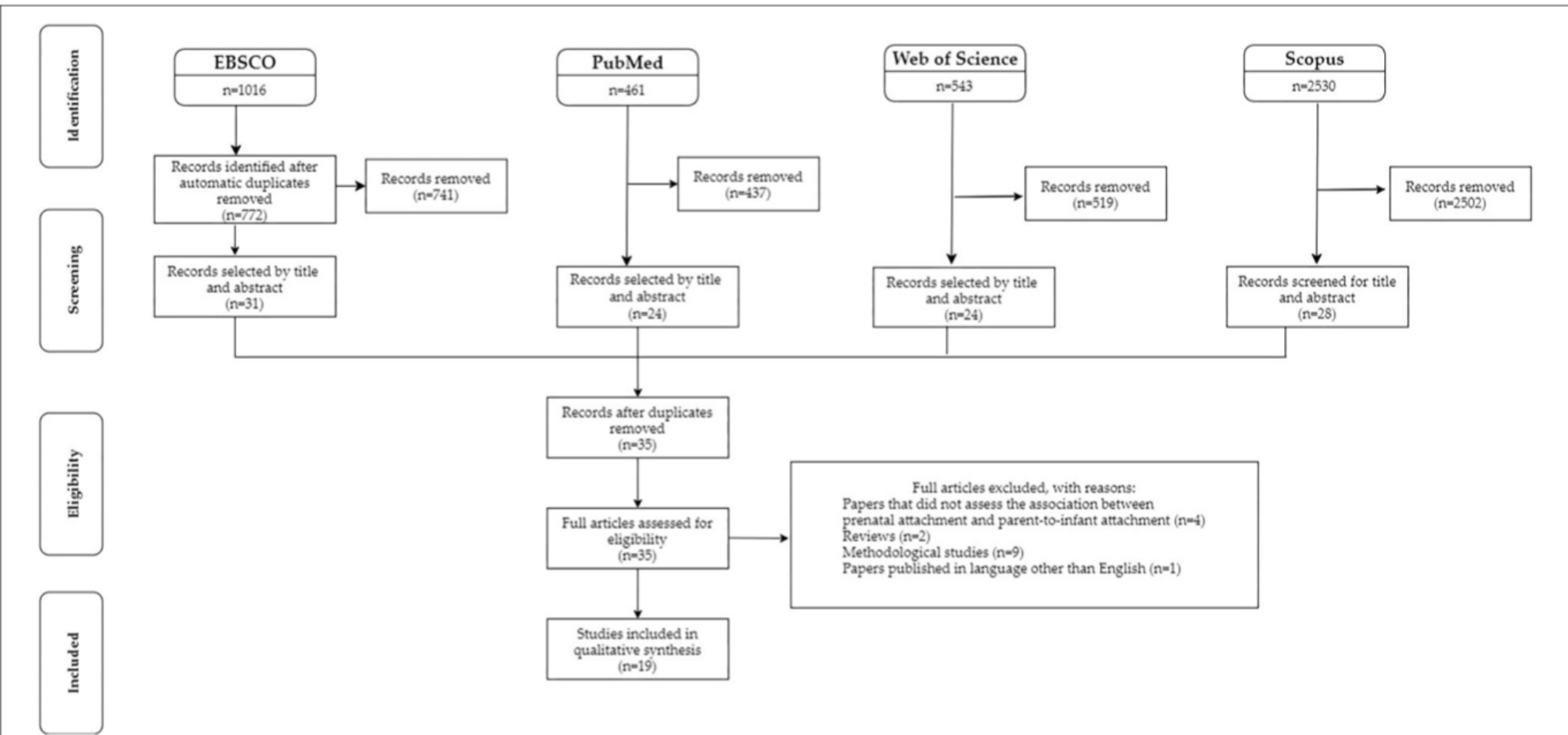


FIGURE 1 | Flowchart of the selection procedure adapted from the Preferred Reporting Items for Systematic reviews and Meta-Analyses (PRISMA) (Moher et al., 2009).

METHODOLOGICAL ISSUES

- Most of the studies were conducted in Europe
- Published between 1994 and 2020
- Demographics: >18 y/o, college degree, employed, middle socioeconomic status, were married/stable partner, ethnic majority
- 16 studies focused on the pregnant woman; 6 assessed fathers
- All used a quantitative approach using self-report instruments
- Variability in self-report
- Homogenous timeframe for pre-natal assessment, Heterogenous timeframe for post-partum assessment

FINDINGS

- All demonstrated greater levels of prenatal attachment are associated with better parent to infant attachment during the postpartum period
- 16 significant and positive association between prenatal attachment and parent to infant attachment
- 3 found a negative association between prenatal attachment and postpartum bonding impairments
- Found in both men and women, first pregnancy or multip, normative and at-risk pregnancies, advantageous or disadvantageous socioeconomic and demographic conditions
- 17 identified a significant association regardless of time of postnatal assessment

DISCUSSION

- Findings support the hypothesis that the attachment bond starts to develop during which influence the relationship with the child after birth
- Early parent to infant attachment associated with more positive child development
- Low or moderate association: assessment tool? Mediated or moderated by childbirth experience, NICU stay
- Lower levels of prenatal attachment found among men compared with women
- Roll women play for the assumption of paternal identity
- Generalize the results?

CLINICAL IMPLICATIONS

- Regular screening and preventative programs at an early stage of pregnancy to increase prenatal attachment and influence the parent child relationship postpartum
- Several programs: Psychosomatically oriented antenatal classes, home visiting interventions, prenatal psychoeducation programs
- Future research: More male samples, non-normative pregnancies, more diversity in participants, cross cultural design, assess with self-report and observation

GUEST SPEAKER

Morgan Forrester Ray, MSW
Director, EarlyWell Initiative

ANNOUNCEMENTS

NC MATTERS Course on Greensboro AHEC

We just released a new course on Attachment and Perinatal Mental Health! Find it at <http://aheconnect.com/ncmatters>



SAVE THE DATE

Next meeting:

Friday, March 17, 2023 @ 1pm

attachmentnetworknc.org/