

Where are your efforts focused these days?

Finding ways to see how equity needs to be address and where is structural racism in the work being done

in-home services, managing staff vacancies and medicaid transformation. Replication in new parts of the state-planning for training of new providers. Encouraging IMH providers to get excited about and

Bringing IMH Endorsement to all kinds of sectors

Abuelitas 911 -- a program of pairing nurturing and wise elder women with undocumented latina mamas who are missing their families supports who live elsewhere. this program can disrupt intergenerational trauma.

Anchoring Circle of Security Parenting throughout our state and eventually getting policy makers and govt representatives to pay for it as a universal offering with tax dollars

Working on establishing a training and consultation program to build capacity and competency in early childhood mental health providers in developmentally appropriate and culturally responsive assessment.

Unique issues related to health, development and parenting for refugees from Afghanistan and other counties

Implementation of Pyramid Model strategies to achieve pro-social classrooms and prevent/address challenging behaviors and suspension/expulsion of children birth-5 from child care centers.

survivors of DV were held responsible for their abuser's behavior's and not being "protective." We have shifted focus and work to keep survivors with their children while keeping them Safe and Together, and

Allow networking and building on efforts and not reinventing

Ensuring new mothers are provided with post-partum resources to improve parent-child relationships and overall family health

Creating a proposal for a network of support for the infant and toddler care and education workforce with infant toddler specialists

Adding anxiety screening to the work we do to address caregiver mental health

offer Circle of Security Parenting groups in Spanish to undocumented mamas and their paired "abuelitas" locally.

at the statewide level to embed attachment-focused understanding in many different sectors: early care and education, Smart Starts and Partnerships for Children, child welfare, early

Connecting providers from across the state to the IMH Endorsement process, creating a shared language to ensure the health of all NC children.

Part of a facilitation group offering COSP. Helping child care staff learn more about attachment.

I am focused on individual work with parents on zoom to help develop sound attachment and perspective.

Learning about how to support families as they re-establish attachment after separation (for any reason)

Recruiting and training mental health clinicians in Child Parent Psychotherapy

Pyramid Model Implementation in public preschool programs, ramping up implementation in kindergarten, and support SEL as part of a child's IEP.

Providing individual consultation to other professionals around issues related to attachment and trauma.

Dealing with political racial equity backlash as we work to address disparities in our field

Dyadic care of infant and birthing individuals in outpatient and inpatient settings

ABC

Teaching parents/caregivers about infant and young child mental health and social/emotional development

How can the Attachment Network help amplify them?

Medicaid policy and systems issues can help or hinder a families access to IMH services. Finding ways to include policy makers in these meetings and in conversations with IMH providers would be great.

Offer trainings/resources about attachment to workers in child welfare. What ways can we foster attachment when safety plans frequently require families to stay apart, having only supervised contact.

Time to come together- reminders to spread awareness, and realizing others are in it with us

Referral Network

Build momentum and a diversified body of stakeholders who actively ASK FOR and EXPECT attachment-focused offerings --for our own families, for the families we serve, for us as professionals. **ADVOCACY** for systems change!

Share info about staff openings in HSB across the state, and making room for attachment training of non-clinical personnel and caregivers.

Families and communities to learn more about the resources that are in their communities

Not get siloed while we do the hard good work before us and be nurtured by other colleagues near and far

Offer provider referrals

It would be so helpful if upcoming trainings and the NC Child Treatment Program website, where anyone in the state can go to find clinicians doing specific evidence based treatments in their own counties, could be mentioned

build interest groups and learn from one another

Network can help get word about Abuelitas 911 to potential participant moms and to potential grandma figure volunteers

Would love for everyone who's work touches young children and their families - so probably everyone here! - to explore the categories for IMH Endorsement.

Help share with families what mental health is. Help release stigma to receiving support services.

Helping to have shared language

Training opportunities for professionals, informational resources for families (multilingual)

Having a place on the website to place job postings would be a great way to get the word out across the state on opportunities that IMH providers might not otherwise see.

Abuelitas 911 (has a small grant through Lucy Daniels Center). The Attachment Network could help look for or secure more funding

commit to reflective supervision and consultation in a deeper and more regular wayand begin to see who is willing to offer RS/C to those who don't have a path for it yet at their workplaces (regardless of context)

Which topic(s) would you like to learn more about?

Would love to share more! :) You can email endorsement@ncimha.org or attend one of our Endorsement 101 meetings on 3/23 or 4/22.

NCIMHA Endorsement



Funding Opportunities for Expansion of Supports

Endorsement <https://forms.gle/ZTzm9r2Pw24P6a8a6>
Endorsement 101 on 3/23
<https://ncimha.wildapricot.org/event-4626338>
Endorsement 101 on 4/22
<https://ncimha.wildapricot.org/event-462638>

Pyramid Model- Early Childhood Education

Share across our group what we are doing and how we build attachment lens into it daily regardless of setting -- get specific

link with the International Attachment Network

we get more... including leaders, professionals, parents as well as dads/uncles/grandpas

National Center for Pyramid Model Innovation (NCPMI) <https://challengingbehavior.cbcs.usf.edu/>

new research about Attachment

How to connect attachment with school and home connections

we need community navigators?

I would like to learn more about attachment starting prenatally (how, what, why, etc.) and services that can be offered prenatally to help with attachment. Also breastfeeding and Infant Massage as a way to form attachment.

ABC Intervention

offer simultaneous interpretation for this meeting (which costs money but it's worth it from an access and language justice perspective)

share about your research on attachment with us in this context

How to connect with individuals in their communities

Successes! :) 'tips'

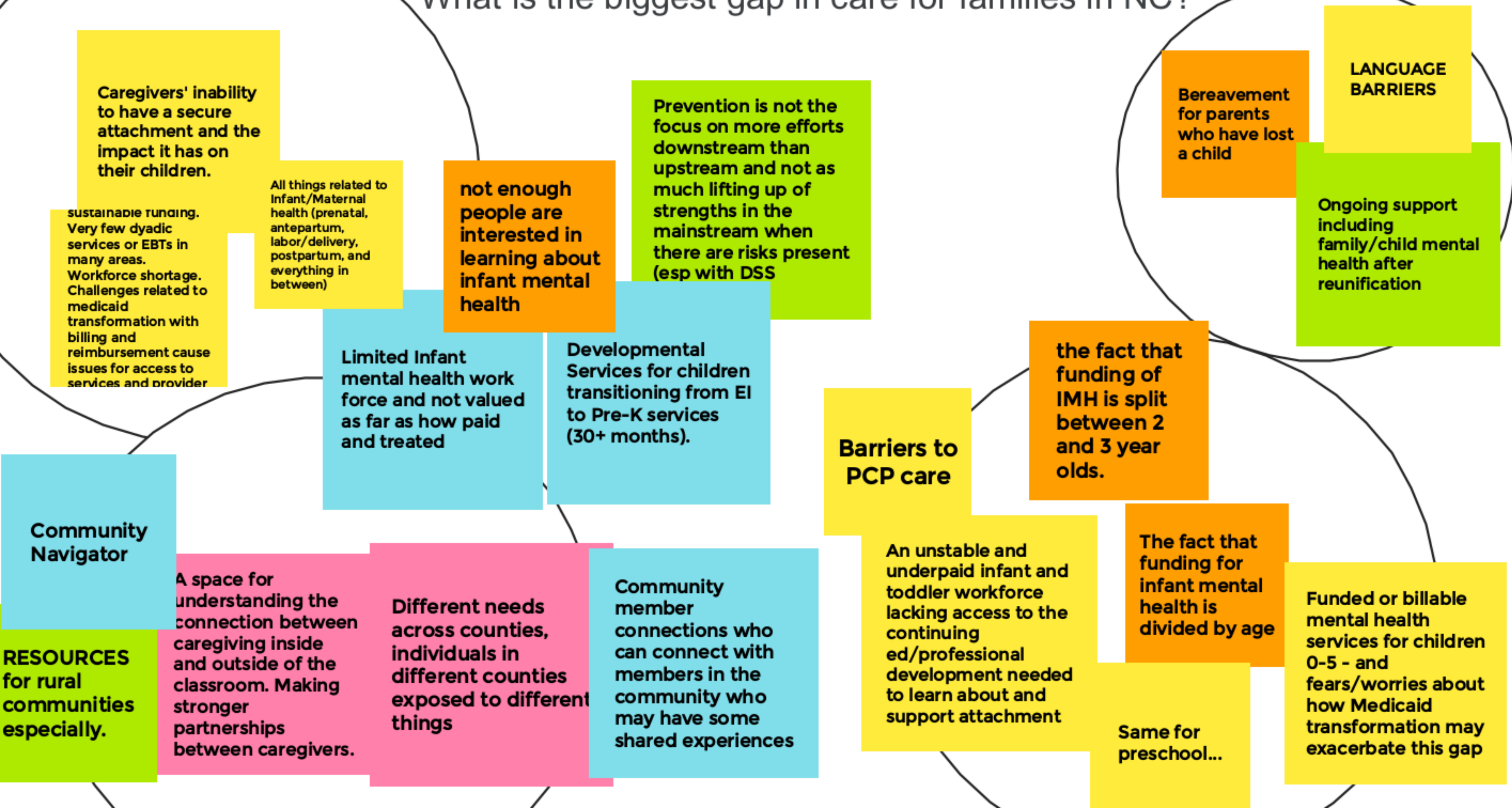
Ways to get families involved when it isn't "required"

what books we are reading (or writing) about Attachment

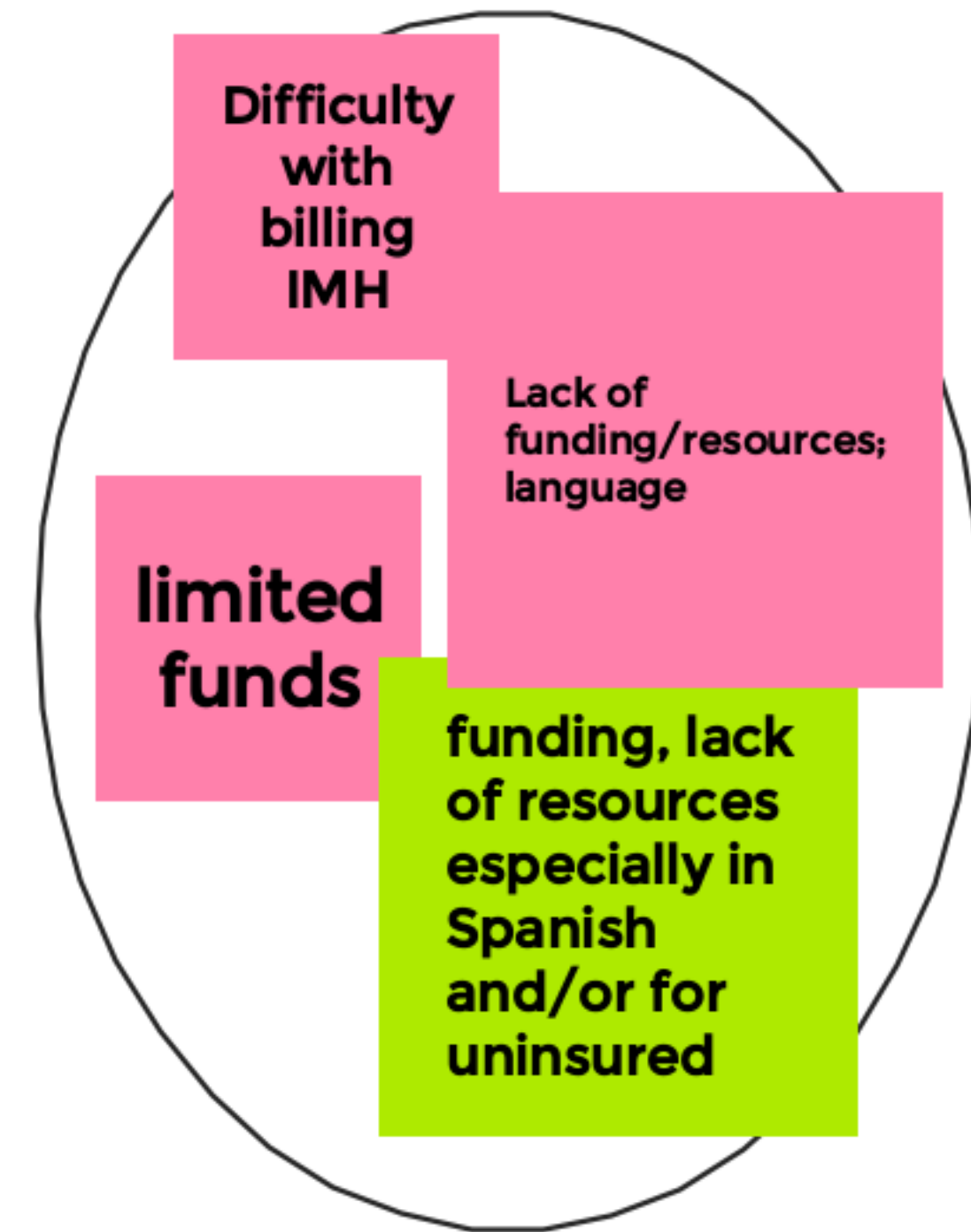
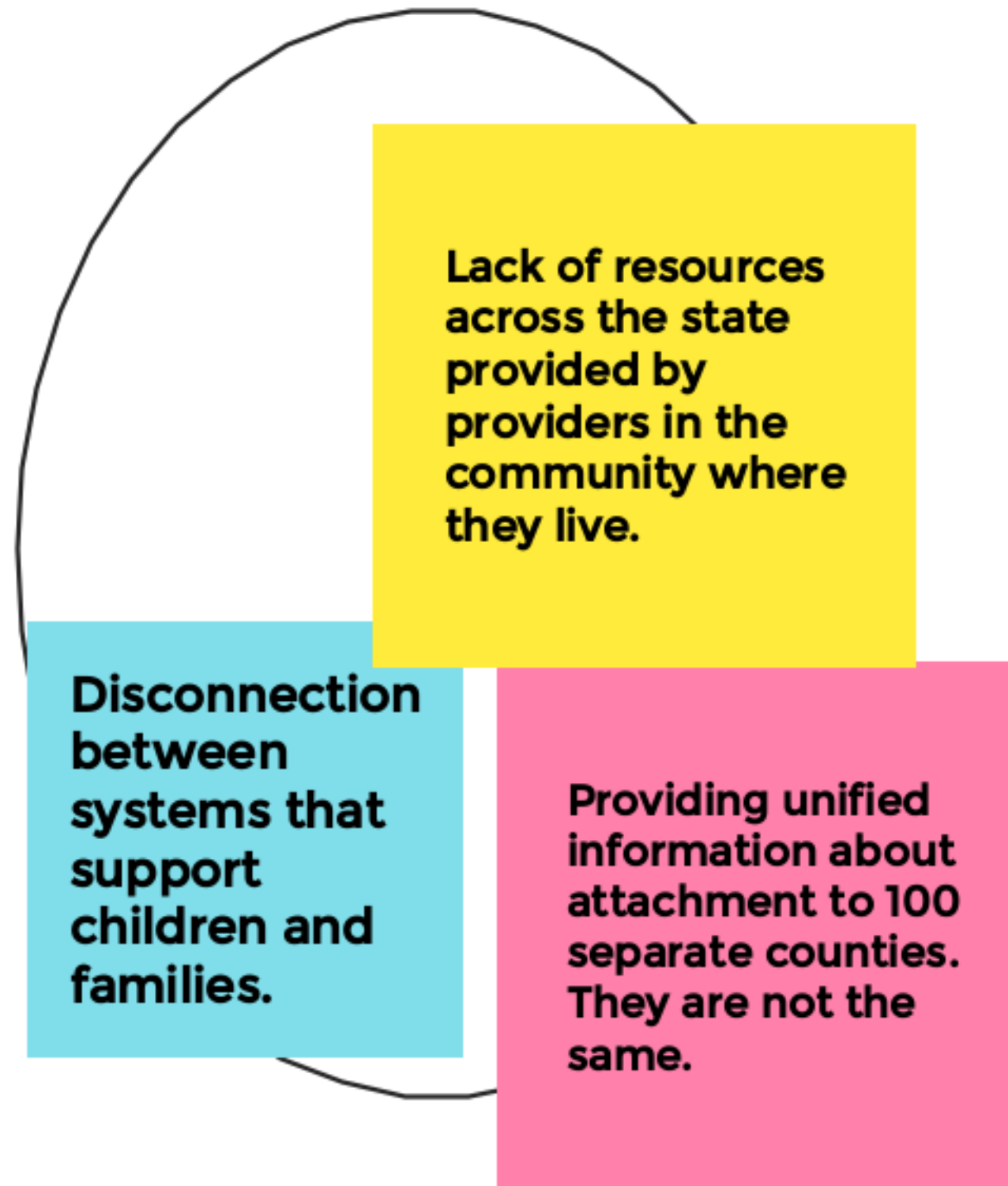
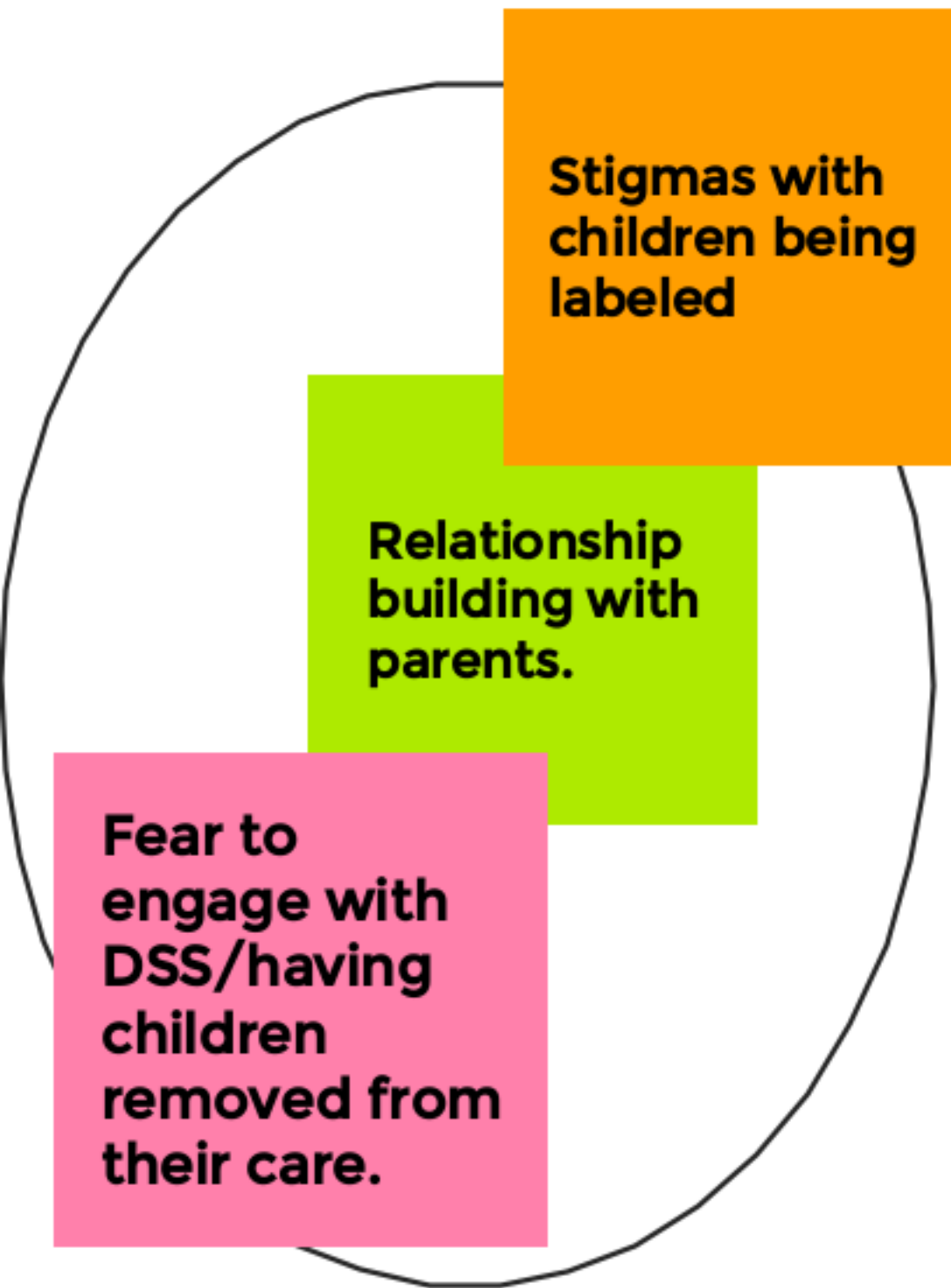
Adult Attachment

I would like to see more about how attachment evolves over

What is the biggest gap in care for families in NC?



What are the barriers to doing your work in NC?



Where do you go to learn more about attachment?

Attachment Network of Connecticut

Parents as Teachers curriculum

"Wired for Love" and "Your Brain on Love" by Stan Tatkin (Adult Attachment)

Dr. Becky - Good Inside podcast

Baby Talk newsletter from Camille Catlett

Harvard Center on the Developing Child and their podcast, Brain Architects; NCTSN

This group!

International Attachment Network

NCTSN, the group of nationally endorsed Child Parent Psychotherapy trainers, the group of nationally endorsed Trauma Focused Cognitive Behavioral Therapy trainers, 0-3 website, Harvard Center on the Developing Child

Circle of Security International

Podcasts! i.e. by The Center for Advanced Studies in ChildWelfare

Zero to Three

Where do you go when you are looking for resources?

Center for the
Developing
Child at
Harvard

NC

NCTSN

Center for
the Study
of Social
Policy

HSB Community
Resource List for
mental health
professionals
serving children
birth - 5. (Psych;
OT/PT/SLT; Social
Work; etc..)

Devereux
Center for
Resilient
Children

Zero
to
Three

Anything by
Alicia
Lieberman,
Arietta Slade,
Bruce Perry.

NAEYC

American
Professional
Society on the
Abuse of
Children

Partnership for
Children:
<https://ccpfc.org/>-Dolly
parton Imagination
Library, child care,
diaper bank, Family
connects, etc.

Circle of
Security

World
Associate
for IMH

Bank
Street

Are you accepting new referrals? Share details here:

**YES!! Children & Family Resource Center, Henderson County. Parents as Teachers + many other programs.
www.childrenandfamily.org, 828-698-0674**

Yes! Child First is accepting referrals at all locations.

**YES! Durham Early Head Start Home Visiting is accepting referrals/applications at this time. More info here:
<https://www.ccfhnc.org/programs/durham-early-head-start-home-based-program/>**

NCIMHA is beginning to accept interest in the IMH Endorsement credential for infant and early childhood providers across the workforce, with the goal of having cohorts begin moving through the process in May. More on www.NCIMHA.org